

Community Room and Kitchen



Handicap Accessible Shower



Typical Bathroom with shower

Main Entrance



The Winslow
9 Wells Street
Greenfield, MA 01301

The Winslow apartments are managed by the Greenfield Housing Authority. Individuals interested in becoming residents are invited to inquire at the following:

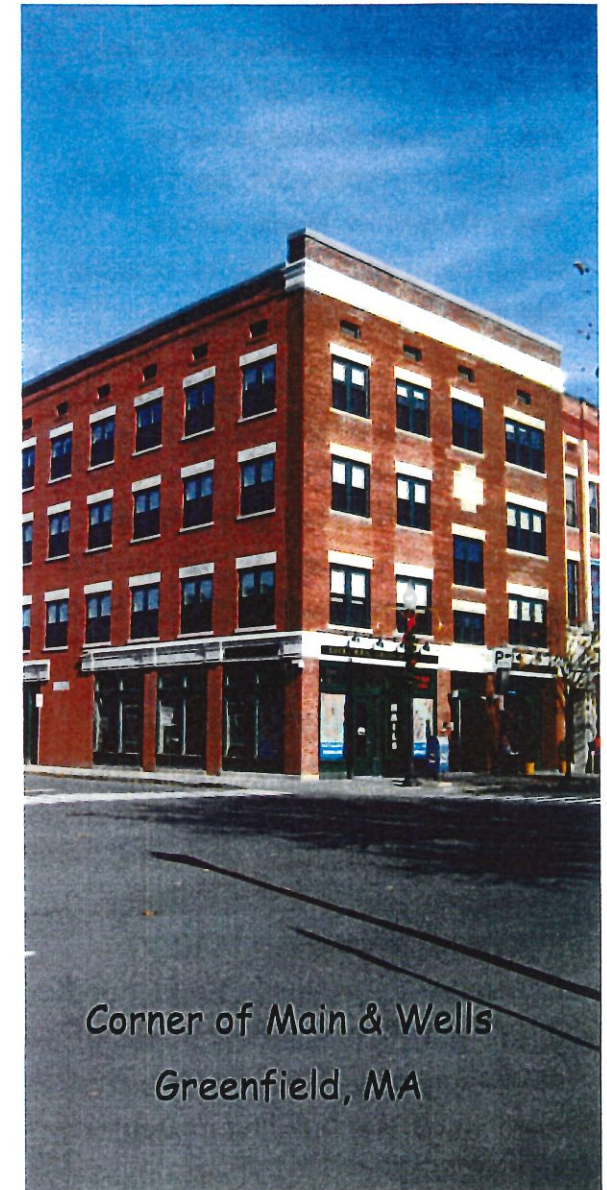
Greenfield Housing Authority
1 Elm Terrace
Greenfield, MA 01301
(413) 774-2932
www.greenfieldhousing.org



EQUAL HOUSING OPPORTUNITY



THE WINSLOW



Corner of Main & Wells
Greenfield, MA

History of The Winslow

The Winslow apartments originally opened its doors in November of 1917 as Mohawk Chambers. An article in the Greenfield Recorder on 11/07/1917 states that the two room suites were designed for transients, particularly the automobile trade, which Greenfield had difficulty housing for the past two seasons.

The site was originally occupied by the Baptist Church from 1865 until 1913 and ironically became the Bijou Theater until its closing and subsequent demolition in 1916.

In 1927 the building became known as the Hotel Winslow and in the 1940's as the Stearns Hotel. In 1950, the building was purchased by Harry & Eva Colodny and became known as HARCO rooms until purchased by Richard Braff in 1965. Winslow Building Management Limited Partnership purchased the building in September of 2007.

A New Beginning

Thus in 2009 began the transformation of the 38 room rooming house into 55 units of affordable housing. A two story addition was constructed along with an elevator to service both structures including the original 4 story building.

Amenities

Off street parking is available and this non smoking building is fully air conditioned. Each unit now contains a kitchenette and private bath.



Elevator Lobby

Also included in the building is a community room & kitchen for parties and other gatherings by the residents. A laundry room is available for residents as well as private offices which are available for use by service providers with clients in the building



Typical Apartment Kitchenette

Affordability

The building was built to provide affordable housing with services for single individuals, either men or women, that are elderly, disabled, or working. An individual's annual income may not exceed \$34,500. (FY 2012)